

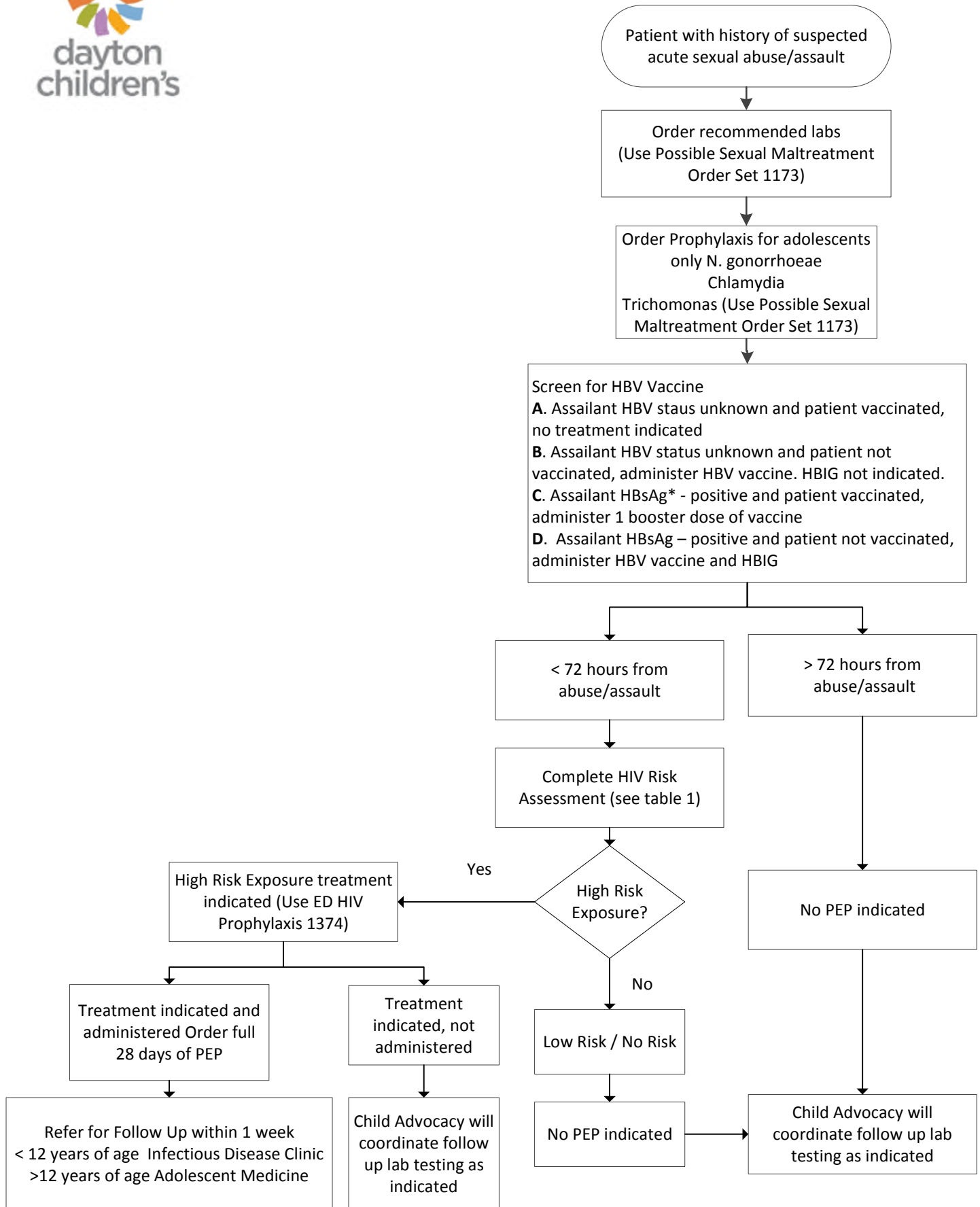


DAYTON CHILDREN'S HOSPITAL
CLINICAL PRACTICE GUIDELINES

DISCLAIMER: This Clinical Practice Guideline (CPG) generally describes a recommended course of treatment for patients with the identified health needs. This CPG is not presented and should not be used as a substitute for the advice of a licensed independent practitioner, as individual patients may require different treatments from those specified, and guidelines cannot address the unique needs of each patient. Dayton Children's shall not be liable for direct, indirect, special, incidental or consequential damages related to the use of this CPG.



STI Prophylaxis After Sexual Exposure



References

Sexual Assault and Abuse and STDs. (2015, June 4). Retrieved from CDC: <https://www.cdc.gov/std/tg2015/sexual-assault.htm#adol>
 Updated Guidelines for Antiretroviral Postexposure Prophylaxis After Sexual, Injection Drug Use, or. (2016, January 1). Retrieved from CDC: <https://www.cdc.gov/hiv/pdf/programresources/cdc-hiv-npep-guidelines.pdf>

Formulated: 7/2019
 Effective: 7/31/19