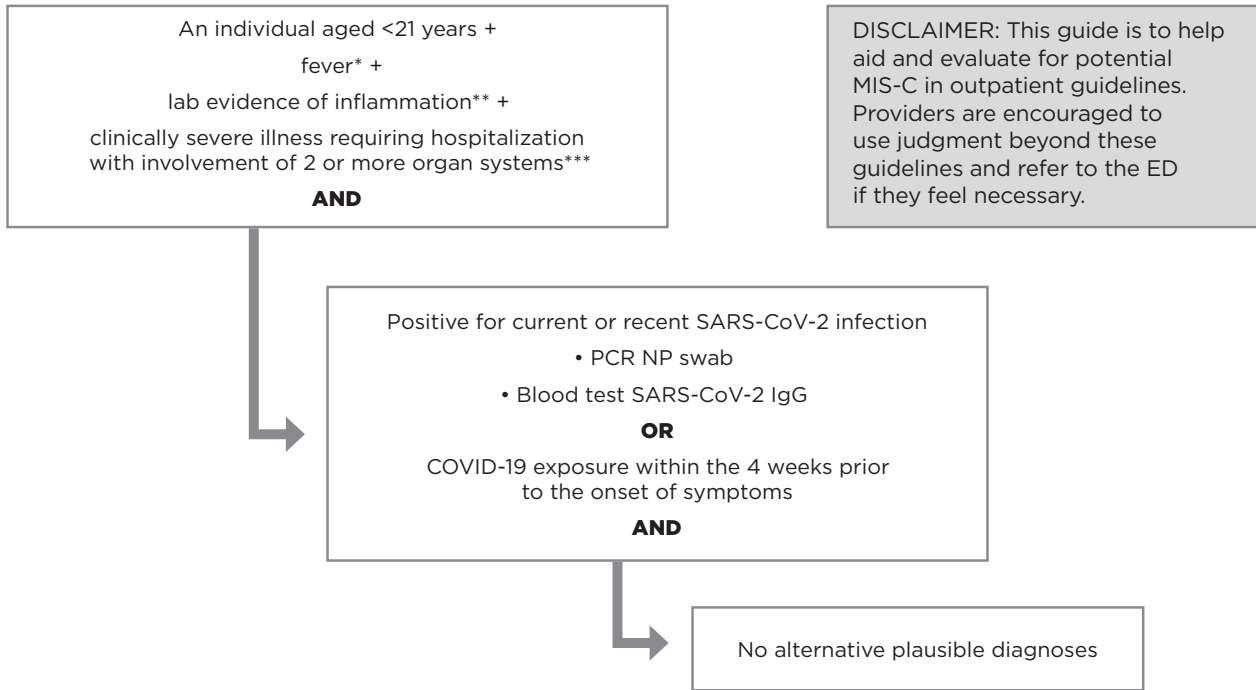


defined by Centers for Disease Control (CDC)

# MIS-C

(multisystem inflammatory syndrome in children)

## when to consider evaluation for MIS-C – office setting



\* Fever - 38.0°C or higher for 24 hours, or report of subjective fever for greater than 24 hours.

\*\* One or more of the following: an elevated C-reactive protein (CRP), erythrocyte sedimentation rate (ESR), fibrinogen, procalcitonin, d-dimer, ferritin, lactic acid dehydrogenase (LDH), elevated neutrophils, reduced lymphocytes and low albumin.

**Additional comment:**

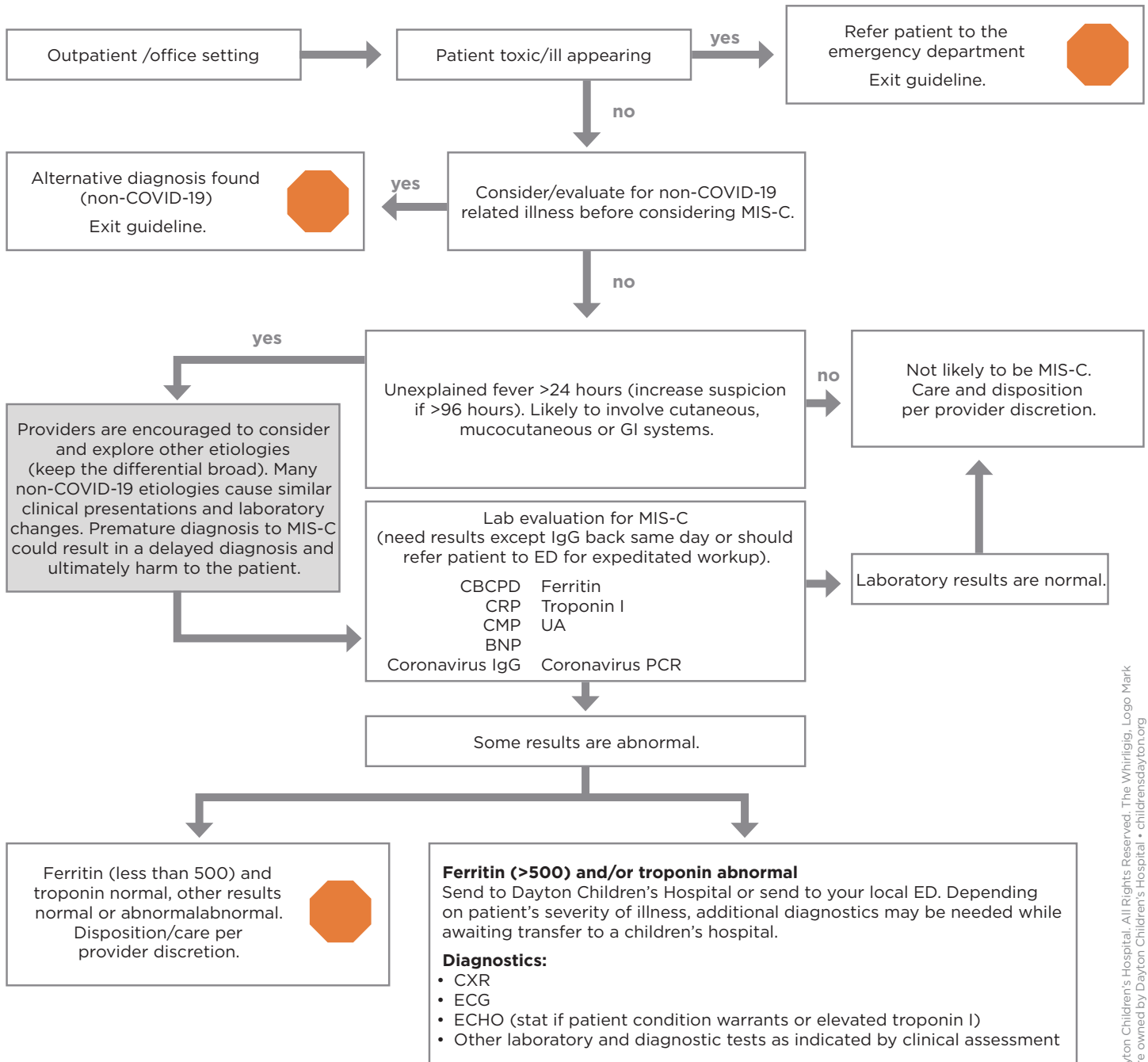
- Patients meeting criteria for Kawasaki disease should be reported if they also meet CDC definition for MIS-C.

\*\*\* Multisystem involvement examples:

- Cardiovascular: shock, increased troponin, elevated BNP, abnormal echocardiogram, arrhythmia
- Respiratory: pneumonia, pulmonary embolism, ARDS
- Renal: AKI, renal failure
- Neurologic: aseptic meningitis, stroke, seizure
- GI: increased LFTS, diarrhea, GI bleed, ileus, vomiting, abdominal pain
- Dermatologic: rash, mucositis, erythroderma

when to consider evaluation for

# MIS-C — office setting



\*\* If unsure or have questions regarding potential MIS-C in an outpatient setting, please contact Dayton Children's pediatric rheumatology via the communications center at 937-641-4385.

